

WINDOWS 365 CLOUD PC

This document is the exclusive property of **Happiest Minds Technologies Limited**. (Happiest Minds); the recipient agrees that they may not copy, transmit, use, or disclose the confidential and proprietary information in this document by any means without the expressed and written consent of Happiest Minds. By accepting a copy, the recipient agrees to adhere to these conditions to the confidentiality of Happiest Minds practices and procedures.

TABLE OF CONTENTS

Introduction	03
Key Factors of Windows 365	03
License Assignment	03
Requirements to Run Windows 365	04
Services & Features	04
ISV partners	04
Windows 365 Gallery	05
Image Gallery	05
Custom Image	05
Watchdog Service	05
Redirection Feature	06
Self Service Settings	07
AVD v/s W365	08
Conclusion	08
Author Bio	09

INTRODUCTION

Modern technology and its enhancement have made a massive impact in revolutionizing many industries. The advancement of tools and technology has made users' lives easy and accessible to the resources from anywhere, any device. Keeping the current trend and requirements in mind, Microsoft has created a [Cloud platform](#) called Cloud PC. This Cloud PC provides a rich Windows desktop experience to the end-users with highly available, optimized, and scalable virtual machines hosted on a Windows 365 service platform that carries the power of Cloud and Security, enabling secured access from anywhere on any endpoint.

The SaaS offering from Microsoft delivers a personalized Windows PC experience, where the Cloud PC (Windows 365) behaves like your personalized desktop, and everything can be streamlined securely through Cloud to your device. Windows 365 Cloud PC is mainly suitable for single session/persistent personal desktop scenarios. By default, Windows 365 Enterprise Cloud PCs are linked to your Active Directory domain, synced to [Azure](#) AD, and managed by Microsoft Endpoint Manager. Each Cloud PC is assigned to an individual user and their dedicated Windows device. Assigning a Cloud PC to a user is just like assigning an Exchange Online mailbox to a user. When a Windows 365 license is assigned to a user, provisioning of a new Cloud PC automatically starts, and the Cloud PC is enrolled into Microsoft Endpoint Manager. Users can access it from any device, which is evaluated based on the user license. Microsoft has come up with a whole new idea to meet today's hybrid environment by introducing Windows 365 Cloud PC.

KEY FACTORS OF WINDOWS 365

The below pointer shows the specific product differentiator concerning Windows 365 compared to other products available in the market.

Procure, provision, and deploy in minutes, with optional automated OS updates	Offers users anywhere access to their personalized Windows desktop experience	Tailor compute and configurations for an elastic workforce
Pick up where you left off on the device of your choice	Optimize experiences on Windows endpoints	Scale confidently with per-user pricing

LICENSE ASSIGNMENT

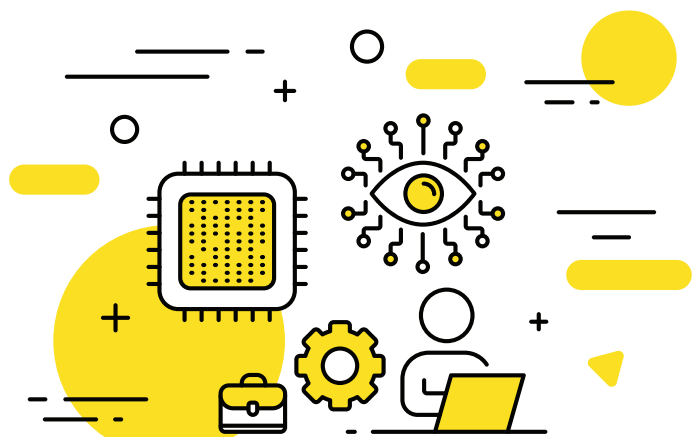
There are two kinds of main models currently supporting Windows 365 Enterprise and Business

01

Windows 365 Business ->
Organizations with up to 300 employees

02

Windows 365 Enterprise ->
Organizations with more than 300 employees



Purchasing and assigning Windows 365 licenses is done through the Microsoft 365 admin centre

STEP 1

Go to admin.microsoft.com and purchase Windows 365 licenses per size

STEP 2

Select users & select active users

STEP 3

Search for the user that you want to assign a Windows 365 license

STEP 4

Assign the Windows 365 license

Pricing details can be accessed from the below link - <https://www.microsoft.com/en-us/windows-365/all-pricing>

Requirements to Run Windows 365

To use Windows 365, you must have the following requirements:

Licenses need to use Cloud PC/Windows 365:

- Users with Windows Pro endpoints: Windows 10 Enterprise E3 + EMS E3 or Microsoft 365 F3/E3/E5/BP
- Users w/non-Windows Pro endpoints: Windows VDA E3 + EMS E3 or Microsoft 365 F3/E3/F5/BP

Azure subscription

Subscription Owner (setup network connection)

Virtual Network (VNet) in Azure subscription

Azure VNet virtual Network must route to a DNS server that can resolve Active Directory records either on-premises or Azure

This AD must be in sync with Azure AD to provide a hybrid identity in Azure AD

Microsoft Intune supported licenses (e.g., Microsoft 365 E3)

Intune Service Admin

Make sure that you have an Azure subscription for configuring the Azure virtual network for the On-premises connection within Windows 365

SERVICES & FEATURES

ISV partners

ISV stands for Independent Software Vendor. Simply put, an ISV makes software that is compatible with the system. The ISV partners use the Cloud PC API/Graph API to provide a better experience for the organization and end-users. Microsoft announces four ISV partners, and those are:



Windows 365 Gallery

Microsoft wants to Windows and Microsoft 365 and is always secure and up to date. There are two types of galleries, namely

Image Gallery

Custom Image

Image Gallery

It allows us to select the pre-baked images per workload type. The Medium, Heavy, Power, and Premium images include Microsoft 365 Apps + Teams AV optimizations out of the box. The Lite image offers an optimized OS experience for a specific workload type to get the best experience possible.

Select an image

PC OS image gallery

Image	Version	Recommended for
Windows 10 Enterprise + Microsoft 365 Apps	21H1	2vCPU/4GB/64GB and above
Windows 10 Enterprise + OS Optimizations	21H1	1vCPU/2GB/64GB
Windows 10 Enterprise + Microsoft 365 Apps	20H2	2vCPU/4GB/64GB and above
Windows 10 Enterprise + OS Optimizations	20H2	1vCPU/2GB/64GB
Windows 10 Enterprise + Microsoft 365 Apps	2004	2vCPU/4GB/64GB and above
Windows 10 Enterprise + OS Optimizations	2004	1vCPU/2GB/64GB
Windows 10 Enterprise + Microsoft 365 Apps	1909	2vCPU/4GB/64GB and above
Windows 10 Enterprise + OS Optimizations	1909	1vCPU/2GB/64GB

1 Image 2 Review + create

Select the gallery image that you want to use to create the cloud PC. Or you can create a new custom image. New cloud PCs will be based on the image you select here.

[Learn more](#)

Image type ⓘ

Custom image

Selected image *

Select

Custom Image

Some organizations prefer to use pre-build custom images. This is also supported with windows 365. The option can be utilized or selected during the policy configuration wizard

Watchdog Service

The aim and vision of Windows 365 are to make things easier and replace complex VDI related infrastructure. Watchdog service will have to investigate the environment for all the pre-requisites to use Windows 365. If the service finds any issues, it will try to fix or send you an IT admin notification to resolve the problem. The below diagram shows how it checks the status.

Overview Properties

Check Name	Status
Azure AD device sync ⓘ	✓ Passed
Azure subscription is valid ⓘ	✓ Passed
First party app permissions exist on Azure subscription ⓘ	✓ Passed
First party app permissions exist on Azure resource group ⓘ	✓ Passed
First party app permissions exist on Azure virtual network ⓘ	✓ Passed
Azure vNet in a supported region ⓘ	✓ Passed
Azure subnet IP address usage ⓘ	✓ Passed
Azure policy restrictions ⓘ	✓ Passed
DNS can resolve Active Directory domain ⓘ	✓ Passed
Active Directory domain join ⓘ	✓ Passed
Endpoint connectivity ⓘ	✓ Passed

Redirection Feature

Endpoint	Windows desktop	Store client	Android	iOS/iPadOS	macOS	Web
Keyboard	X	X	X	X	X	X
Mouse	X	X	X	X	X	X
Touch	X	X	X	X		X
Serial port	X					
USB	X					
Teams AV Redirection	X					
Multi-media redirection	Coming Soon					
Multi-monitor	16 monitors					
Dynamic resolution	X	X			X	X
Screen capture protection	X					
Cameras	X		X	X	X	
Start menu integration	X					
Clipboard	X	X	Test	Text, images	X	text
Local drive/ storage	X		X	X	X	
Accessibility	X					
Location	X					
Microphones	X	X	Coming soon	X	X	In preview
Printers	X				X (CUPS only)	PDF print
Scanners	X					
Smart Cards	X				X	
Speakers	X	X	X	X	X	X

Self Service Settings

Windows 365 access has been made more accessible; currently, access has been granted in 2 variations, namely

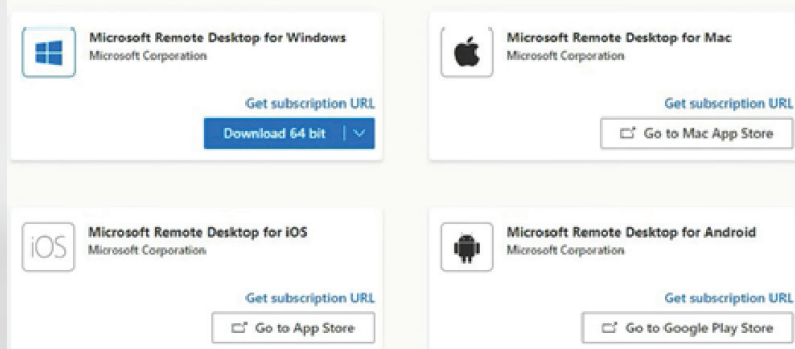
- 01** Client-side portal access web portal: provided through – <https://windows365.microsoft.com>
- 02** Access Via RDClient: This can be accessed through a specific OS level native client.

Note: Currently, Linux is not supporting we may expect this soon.

Subscription URL download

Microsoft Remote Desktop apps

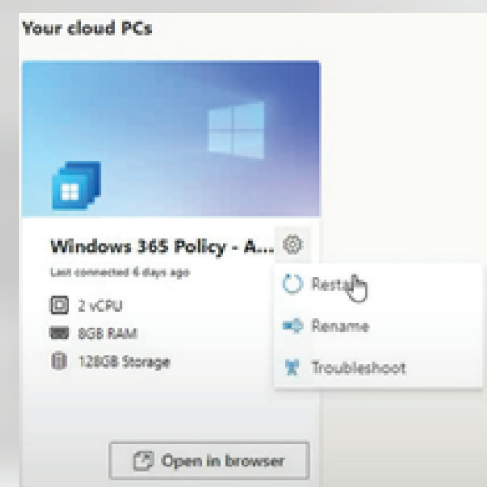
Use a Remote Desktop app to connect to a remote PC, virtual apps, and desktops made available to you.



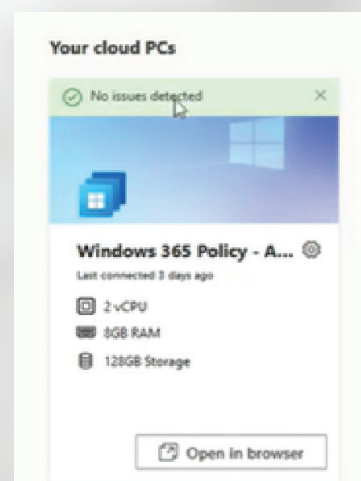
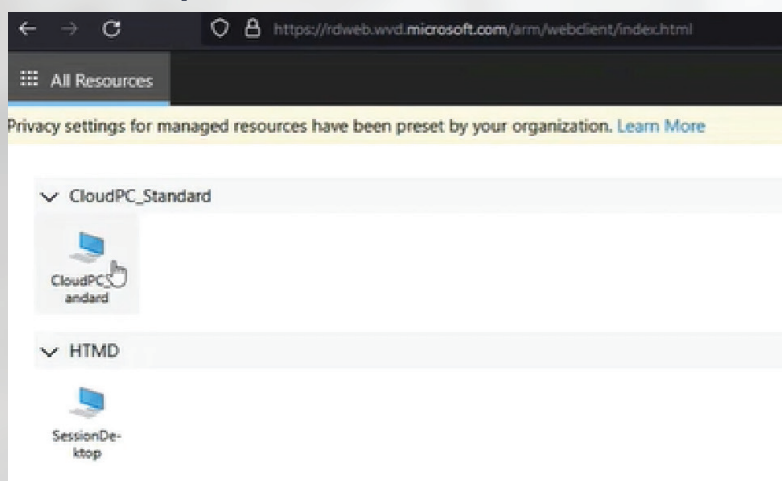
Once you login to the web portal, you can view your Cloud PC's



Option to restart the machine



In the AVD portal to access Cloud PC,



Troubleshooting the PC, Microsoft will detect the basic troubleshooting of the pre-build setting, detect the problem, and point you in the right direction.

Deploy policies from Intune. You don't have the option to deploy anything from SCCM (On-Prem). Applicable only from SCCM Co-management and Intune.

AVD v/s W365

AVD (Azure Virtual Desktop) needs to manage everything like creating of VM, hardware part configuration. User-based license (Charge on the uptime of the license; autoscaling is more; multi-session users' issue there will be risk factor); traditional VDI kind of the model.

W365 is tightly integrated with EPM / Intune; no worries of Multisession; per user, per drive license; you can keep it only for 24 hours also; just like and Hyper-V build your PC. If you need for personal desktop, use this feature. Currently, there is no multi-session environment support with Windows 365 Cloud PC.

Azure Virtual Desktop	Windows 365 Cloud PC (Enterprise)
Cloud VDI Solution	SaaS Solution
Windows 10 Single Session & Multi-Session Desktops and Remote Apps	Windows 10 Single Session
Full control over management and deployment (?) – You can use whichever tool you want (SCCM/Intune/Third-party)?	Simplified/SaaS Management only with MEM Intune/Other UEM solutions as well?
Citrix, VMWare integration	NA
Consumption-Based Pricing	Per-user pricing
Flexibility	Simplicity

CONCLUSION

Windows 365 makes provisioning Windows 10 PCs in Azure to end-users anywhere very simple. This is a refreshing change from the complexities of Azure Virtual Desktop or even physical deployments such as traditional Operating System Deployment and Autopilot. It enables you to decrease costs while lowering the complexity of your environment as you deploy and manage virtual endpoints in Microsoft Endpoint Manager. No additional virtual desktop infrastructure (VDI) expertise or resources are needed. Windows 365 helps organizations of all sizes need secure and agile hybrid work solutions with Cloud PC service. Automatically provision on-demand Windows \Enterprise Cloud PCs for users. With the help of provisioning policies, we can create Cloud PC configurations. Cloud PC will have pre-Install apps, plus we can push additional apps through Microsoft Endpoint Manager.



AUTHOR BIO

Yashaswi KC is a Digital Workspace Architect; he has over 11+ years of IT experience with End User Computing technology. He has spent many years planning, designing, consulting for different EUCS Platforms. He has worked with multiple digital workspace platforms like MMD, WVD (AVD), Autopilot, Intune, Application packaging, Nexthink. Yashaswi KC is currently working as an Associate Architect at Happiest minds Technologies; he is responsible for prepare and launch EUC related Go-to-Market strategies and service offerings to customers. Assist Sales team on RFPs (new and proactive deals) for EUC technologies and services.

Business Contact business@happiestminds.com



www.happiestminds.com

About Happiest Minds Technologies

Happiest Minds Technologies Limited (NSE: HAPPSTMNDS), a Mindful IT Company, enables **digital transformation** for enterprises and technology providers by delivering seamless customer experiences, business efficiency and actionable insights. We do this by leveraging a spectrum of disruptive technologies such as: **artificial intelligence, blockchain, cloud, digital process automation, internet of things, robotics / drones, security, virtual/augmented reality**, etc. Positioned as 'Born Digital. Born Agile', our capabilities span digital solutions, infrastructure, product engineering and security. We deliver these services across industry sectors such as automotive, BFSI, consumer packaged goods, e-commerce, edutech, engineering R&D, hi-tech, manufacturing, retail and travel/transportation/hospitality.

A Great Place to Work-Certified™ Company, Happiest Minds is headquartered in Bangalore, India with operations in the U.S., UK, Canada, Australia and Middle East.