

Digital Ready IT Infrastructure Services



```
mod = modifier_ob.  
mirror object to mirror  
r_mod.mirror_object =  
tion = "MIRROR X":  
r_mod.use_x = True  
r_mod.use_y = False  
r_mod.use_z = False  
ation = "MIRROR_Y":  
r_mod.use_x = False  
r_mod.use_y = True  
r_mod.use_z = False  
ation = "MIRROR_Z":  
r_mod.use_x = False  
r_mod.use_y = False  
r_mod.use_z = True  
selection at the end -add  
r_ob.select= 1  
r_ob.select=1  
context.scene.objects.active  
("Selected" + str(modifier_ob.  
mirror_ob.select = 0  
bpy.context.selected_object  
data.objects[one.name].select  
int("please select exactly  
OPERATOR CLASSES -----  
types.Operator):  
X mirror to the selected  
object.mirror_mirror_x"  
error X"  
context):  
context.active_object is not
```

OVERVIEW

Rapid technology shifts and innovations are creating new business imperatives. Businesses are adopting Digital technologies to build new and innovative business models, reduce time-to-market, optimize business processes, empower their workforce and personalize customer experience. Aligning IT to the business is key to the success of an organization that is on the Digital journey. IT infrastructure has a key role in enabling this Digital journey when it aligns to the following priorities and outcomes:



AGILE INFRASTRUCTURE

- ▶ Automation Driven Agility
- ▶ Streamlined Workflows
- ▶ IT Operational Intelligence

EMPLOYEE PRODUCTIVITY

- ▶ Enabling New Ways of Working
- ▶ Effective Team Collaboration
- ▶ Employee Retention

CUSTOMER EXPERIENCE

- ▶ Omni-channel Experience
- ▶ Analytics Driven Insights
- ▶ Increased Customer Loyalty

SECURITY & COMPLIANCE

- ▶ Real-time Threat Management
- ▶ Protect Brand Reputation
- ▶ Lower Risk to Business

Happiest Minds' Managed Infrastructure Services is a comprehensive, integrated suite of services to manage an Enterprises' distributed and Hybrid IT environment as a single entity with single point-of accountability.

DERIVED BUSINESS VALUES FROM OUR SERVICES

Cost Effective –

Standardized services with focus on Y-o-Y productivity gains

End-to-End Visibility –

Unified visibility across private/public/hybrid infrastructure enabled by advanced analytics

KPIs & Metrics – Business centric KPIs & metric measurements

Automation Driven Agility –

Faster time-to-market and enhanced user experience through IT process automation

Technology Transformation –

Comprehensive suite of consulting and transformation services that enable Digital journey

Flexible Engagement Models

– Engagement and pricing models tuned to the business requirements

SERVICE OFFERINGS

Managed Infrastructure Services

Happiest Minds **managed infrastructure services** consist of comprehensive and modular services components that covers:

STANDARD

- ▶ Service Desk and NOC Services
- ▶ Infrastructure & Application Monitoring
- ▶ L1/2/3-Tiered Support
- ▶ Vendor Management
- ▶ Asset Management
- ▶ Custom Dashboards & Reports

ENHANCED

- ▶ AIOps Enabled IT Operations
- ▶ Hybrid Cloud Management
- ▶ Advanced Patch Management
- ▶ DevOps Integration

ADVANCED

- ▶ Infrastructure Automation and Orchestration
- ▶ **Robotic Process Automation**
- ▶ DevSecOps Integration

We leverage **ELLIPSE** - a Next-Gen Managed Services Delivery Platform to provide multiple service tiers to deliver high value solutions to customers.

Infrastructure Consulting & Assessment Services

We offer a comprehensive **Infrastructure Consulting and Assessment Services** by performing an in-depth analysis of the AS-IS state, gap analysis and developing a comprehensive high-level plan for the Build and Run Model for the TO-BE state of IT infrastructure.

AS-IS State Assessment

- ▶ Data Collection & Baseline of Existing Infrastructure Covering Cloud, Data Center, End User Computing, Network and Collaboration Technologies
- ▶ Scale, Scope, Performance and Capacity of the Current Infrastructure
- ▶ Infrastructure Monitoring and Management Processes and Tools
- ▶ People, Skills and Team Structures
- ▶ Business Priorities that need IT Infrastructure Alignment
- ▶ Application Dependencies
- ▶ Standard Operating Procedures

TO-BE State IT Infrastructure

- ▶ Quick Wins and Long-Term Improvement Plans
- ▶ Infrastructure Strategy and Transformation Roadmap
- ▶ Adoption of New & Emerging Technologies
- ▶ Architecture and High-Level Designs
- ▶ Migration and Implementation Plans
- ▶ Indicative Timelines and Costs
- ▶ Tools, Processes & Skill Enhancements
- ▶ Recommendations for Infrastructure Optimization
- ▶ Recommendations for IT Service Management and Operational Enhancements

Cloud & Data Center Services for Public, Private and Hybrid

We offer a comprehensive and end-to-end **Cloud and DC Infrastructure services** to ensure seamless migration of application workloads, monitoring, management and optimization of Cloud, DC or a **Hybrid Cloud** infrastructure scenario.

Advisory & Assessment

- ▶ Infrastructure Assessment
- ▶ Application Portfolio Analysis
- ▶ ROI – Business Case
- ▶ High Level Architecture
- ▶ Migration Strategy & Planning
- ▶ DR/BCP Consulting

Build, Deploy, Integrate & Migrate

- ▶ DC/Cloud Build
- ▶ Proof of Concept
- ▶ Integration
- ▶ Migration

DC & Cloud Automation

- ▶ Self-service Portals
- ▶ Infrastructure Orchestration & Automation
- ▶ DevOps Integration
- ▶ IT Consumerization

Managed Services

- ▶ DC & Cloud Management
- ▶ 24/7 Monitoring Support
- ▶ Level 1/2/3 Support
- ▶ Custom Dashboards & Reports
- ▶ Optimization of Cloud & DC Capacity

Smart and Secure Workspace

We ensure device-agnostic digital experiences with anytime, anywhere and location-independent access to users. We follow a comprehensive and user-centric approach focused on:

01 Enabling new ways of working

02 Faster decision making through effective team collaboration

03 Higher employee experience

04 Securing user devices and data

Consulting and Design

- ▶ Digital workspace transformation analysis and approach
- ▶ Workspace service integration
- ▶ Cloud adoption opportunity identification
- ▶ End-user and device analysis
- ▶ Identification of key automation opportunities

Build and Migrate

- ▶ Detailed environment assessment
- ▶ End-user persona mapping
- ▶ Solution design and planning
- ▶ Service implementation
- ▶ Cloud adoption and migration

Manage and Automate

- ▶ End-user service operations
- ▶ Level 1/2/3 support
- ▶ Custom reports and dashboards
- ▶ Continual service improvement
- ▶ Enhance automation adoption

Service Automation: ITSM and ITOM Tools Services

Our ITSM and ITOM practice possess a wealth of experience in supporting **ITSM and ITOM solutions** across Enterprises of various verticals and maturity levels with the following offerings:

Advisory and Assessment

- ▶ Technical Consulting
- ▶ RoI and UX/EX Driven Recommendations and Roadmaps
- ▶ Tools Consolidation
- ▶ Environment Assessment & Upgrade
- ▶ Process Consulting

Implementation and Customization

- ▶ Implementation Services
- ▶ Customization & Automation Services
- ▶ Service Integration
- ▶ ITSM / ITOM Tool Upgrades

Maintenance & Operations

- ▶ Implementation Services
- ▶ Customization & Automation Services
- ▶ Service Integration
- ▶ ITSM / ITOM Tool Upgrades

Network Lifecycle Services

We provide a full spectrum of Network Services for the Enterprises through its Consulting, Integration & Deployment and **Managed Network Services** capabilities coupled with partnerships with the leading vendors in the Network space.

Consulting Services

- ▶ Network Maturity Assessment
- ▶ AS-IS Maturity Modeling
- ▶ TO-BE State Recommendations
- ▶ Network Planning & Design
- ▶ Strategic Planning & Roadmap
- ▶ Adoption – SDN / Cloud / Tools
- ▶ Solution Architecture
- ▶ Deployment/Migration Planning

Integration and Deployment

- ▶ Network Design
- ▶ Network Architecture
- ▶ High Level & Low-Level Designs
- ▶ PoC & Pilot
- ▶ Network Deployment & Migration

Managed Network Services

- ▶ Network Operations Center
- ▶ 24/7 Monitoring & L1/2/3 Support
- ▶ Operational Support for LAN, WLAN, WAN and Security Devices
- ▶ Unified Communications
- ▶ Performance, Availability and Capacity Management

Optimization Services

- ▶ Network Refresh Services
- ▶ Traffic Analysis
- ▶ Site Consolidation
- ▶ BCP and DR Setup
- ▶ Network Automation
- ▶ Process Optimization
- ▶ NMS Tools & Process Optimization

Data Base & Middleware Services

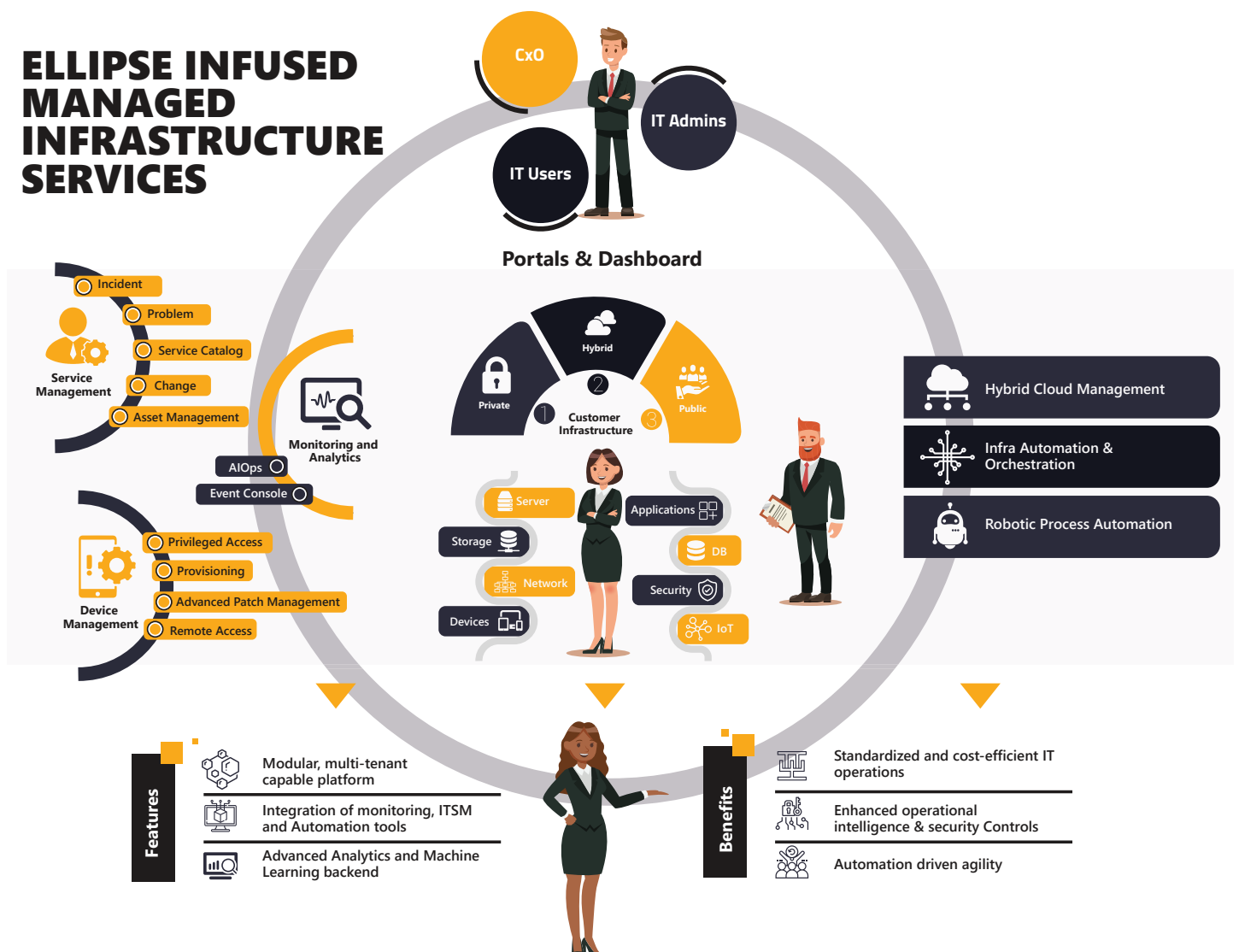
We offer full spectrum of services covering consulting, designing, implementation, support and optimization services.

Consulting	Implementation and Migration	Support / Manage
<ul style="list-style-type: none"> ▶ Solution Designing ▶ Performance Tuning ▶ Auditing Solutions ▶ Backup and Recovery Solutions 	<ul style="list-style-type: none"> ▶ Implementation Services ▶ Migration Services ▶ Integration Services ▶ Upgrade Services 	<ul style="list-style-type: none"> ▶ 24/7 & 8/5 Support ▶ DB Support Services (L1, L2, L3) ▶ Middleware Support Services (L1, L2, L3) ▶ Application Support (L1)

SOLUTION SUITES

ELLIPSE Platform

Next-Gen managed services platform for managing and enabling agile and secure hybrid IT infrastructure. It solves issues such as operational complexity, lack of unified IT visibility and actionable insights, poor user experience, low IT service levels, customer churn and revenue leakage that traditional IT infrastructure tools fail to address.



Business Challenges addressed by ELLIPSE Platform



Lack of Unified view of IT



Slow issue resolution involving large IT teams



High MTTR and downtimes



Poor user experience and inefficient operations



High cost of operations



Poor service levels



Customer churn

Impact Delivered by ELLIPSE Platform Powered Managed Services



Standardized and Cost-Efficient IT Operations



Enhanced Operational Intelligence & Security Controls through Advanced Analytics and AIOps Automation Driven Agility

KEY SKILLS AND PARTNERSHIPS

Cloud Infrastructure	Workspaces	Networking	Tools & Automation
Azure amazon web services vmware Google Cloud Red Hat ORACLE CLOUDERA cassandra TIBCO DELL EMC Hewlett Packard Enterprise	Microsoft vmware CITRIX flexera G Suite Lakeside	CISCO Check Point SOFTWARE TECHNOLOGIES LTD. paloalto NETWORKS FORTINET. JUNIPER NETWORKS vmware	servicenow ManageEngine bmcsoftware CloudFabrix CloudFX CloudCheckr solarwinds MICRO FOCUS Nagios CHEF ANSIBLE HashiCorp puppet



Business Contact **business@happiestminds.com**

About Happiest Minds Technologies

Happiest Minds, the Mindful IT Company, applies agile methodologies to enable digital transformation for enterprises and technology providers by delivering seamless customer experience, business efficiency and actionable insights. We leverage a spectrum of disruptive technologies such as: Big Data Analytics, AI & Cognitive Computing, Internet of Things, Cloud, Security, SDN-NFV, Blockchain, Automation including RPA, etc. Positioned as "Born Digital . Born Agile", our capabilities spans across product engineering, digital business solutions, infrastructure management and security services. We deliver these services across industry sectors such as retail, consumer packaged goods, edutech, e-commerce, banking, insurance, hi-tech, engineering R&D, manufacturing, automotive and travel/transportation/hospitality.

A Great Place to Work-Certified™ company, Happiest Minds is headquartered in Bangalore, India with operations in the U.S., UK, The Netherlands, Australia and Middle East.



www.happiestminds.com